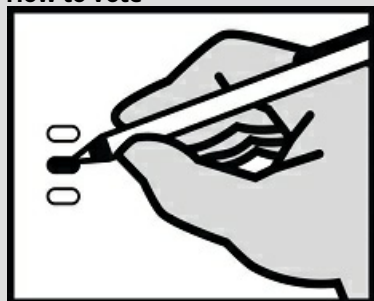


OFFICIAL BALLOT
General Election
Pacific County, Washington
November 8, 2022

Precinct: SAMPLE
SAMPLE 10

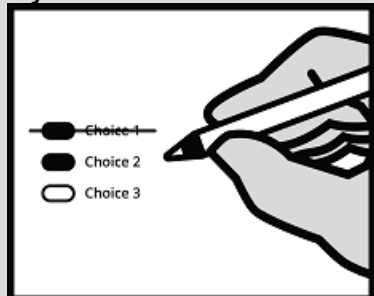
Instructions

How to vote



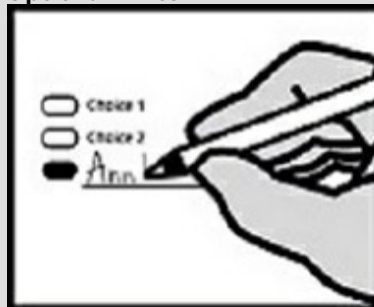
Use a dark blue or black ink pen to completely fill in the oval to the left of your choice. Vote for one in each race. If you vote for more than one, no votes will be counted for that race.

If you make a mistake



Draw a line through the entire candidate response. Then you may make another choice.

Optional Write-in



To vote for a candidate not listed for that race, fill in the oval to the left of blank line and print the name on the line.

Who donates to campaigns?

View contributors for candidates and measures at:

Public Disclosure Commission

www.pdc.wa.gov

Toll free (877)601-2828

Advisory Votes

Advisory Vote No. 39 Engrossed Substitute Senate Bill 5974

The legislature increased, without a vote of the people, the tax on aircraft fuel from 11 cents to 18 cents per gallon, costing \$14 million in its first ten years, for government spending.

This tax increase should be:

- ☐ Repealed
☐ Maintained

Advisory Vote No. 40 Engrossed Substitute House Bill 2076

The legislature imposed, without a vote of the people, premiums on "transportation network companies" to provide workers compensation to their drivers, costing an indeterminate amount in its first ten years, for government spending.

This tax increase should be:

- ☐ Repealed
☐ Maintained

Read: Each candidate for partisan office may state a political party that he or she prefers. A candidate's preference does not imply that the candidate is nominated or endorsed by the party, or that the party approves of or associates with that candidate.

Federal Partisan Offices

United States U.S. Senator

- ☐ **Patty Murray**
(Prefers Democratic Party)
☐ **Tiffany Smiley**
(Prefers Republican Party)
☐ _____

Congressional District 3 U.S. Representative

- ☐ **Marie Gluesenkamp Perez**
(Prefers Democratic Party)
☐ **Joe Kent**
(Prefers Republican Party)
☐ _____

State Partisan Offices

Secretary of State

- ☐ **Steve Hobbs**
(Prefers Democratic Party)
☐ **Julie Anderson**
(Prefers Nonpartisan Party)
☐ _____

Legislative District 19 State Representative Pos. 1

- ☐ **Jim Walsh**
(Prefers Republican Party)
☐ **Kelli Hughes-Ham**
(Prefers Democratic Party)
☐ _____

Legislative District 19 State Representative Pos. 2

- ☐ **Joel McEntire**
(Prefers Republican Party)
☐ **Cara Cusack**
(Prefers Democratic Party)
☐ _____

County Partisan Offices

Pacific County Assessor

- ☐ **Bruce Walker**
(States No Party Preference)
☐ _____

Pacific County Auditor

- ☐ **Joyce Kidd**
(States No Party Preference)
☐ _____

Vote Both Sides

**Pacific County
Clerk**

- ☐ **Emma Rose**
(Prefers Independent Party)
- ☐ _____

**Court of Appeals, Division 2
District 3 Judge, Position 2**

- ☐ **Anne Cruser**
- ☐ _____

**Pacific County
Sheriff**

- ☐ **Robin Souvenir**
(Prefers Independent Party)
- ☐ **Daniel C. Garcia**
(Prefers Republican Party)
- ☐ _____

**Pacific County
North District Court Judge**

- ☐ **Scott Harmer**
- ☐ _____

**Pacific County
Treasurer**

- ☐ **Renee L. Goodin**
(States No Party Preference)
- ☐ _____

**Pacific County
South District Court Judge**

- ☐ **Nancy R. McAllister**
- ☐ _____

**Pacific County
Prosecuting Attorney
Short & Full 4 year term**

- ☐ **Michael Rothman**
(Prefers Republican Party)
- ☐ _____

Public Utility District

**PUD District 2
Public Utility Commissioner 3**

- ☐ **Michelle Layman**
- ☐ **Dick Anderson**
- ☐ _____

**Pacific County
Commissioner Dist. 3**

- ☐ **Michael "Hawk" Runyon**
(States No Party Preference)
- ☐ **Jerry Doyle**
(Prefers Independent Party)
- ☐ _____

Nonpartisan Offices

**Supreme Court
Justice Position 1**

- ☐ **Mary I. Yu**
- ☐ _____

**Supreme Court
Justice Position 5**

- ☐ **Barbara Madsen**
- ☐ _____

**Supreme Court
Justice Position 6**

- ☐ **G. Helen Whitener**
- ☐ _____

Vote Both Sides